



**NEW!**

# GERSTEL MAESTRO LabFlow Software

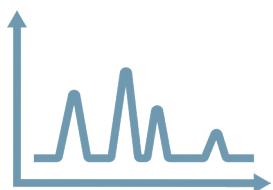
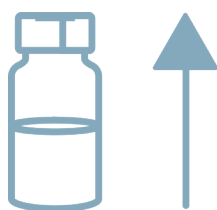
The new Generation for  
your Laboratory





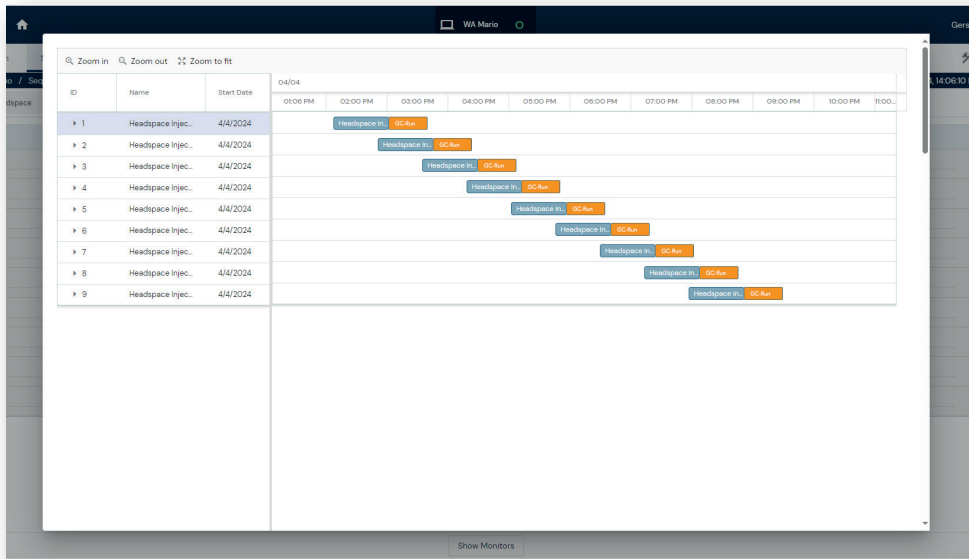
MAESTRO LabFlow includes a large number of standard workflows. Your customized individual workflow can easily be included.

## Introducing GERSTEL MAESTRO LabFlow Software: Revolutionizing Your Lab Workflow!

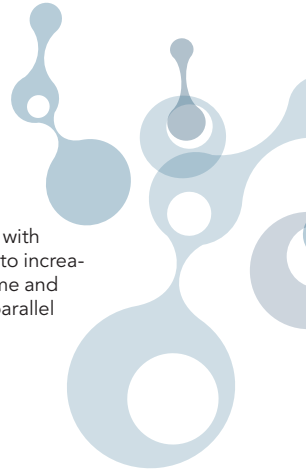


- **Centralized Control in Client-Server architecture:** Enjoy the benefits of a client-server installation, empowering lab staff and management to operate and monitor systems centrally from any client.
- **Modern and appealing new User Interface:** intuitive State-of-the-art software with many tools to revolutionize individual workflows directly in your browser.
- **Enhanced Integration of OpenLab 2:** Seamless integration of OpenLab 2 Software for Workstation, providing an integrated method editor for streamlined processes.
- **Advanced MAESTRO LabFlow Scheduler:** Optimize sample processing with parallel execution of multiple tasks, enhancing efficiency across all sequences simultaneously and automatically.
- **Easy Data Import:** Effortlessly generate sequences by importing tables in Microsoft® Excel format simplifying workflow management.
- **Integrated Audit Trail:** Comprehensive logging of all changes, ensuring traceability of method, sequence, and configuration modifications.
- **User-Centric Management:** Tailored user roles on three levels and method protection with version control (draft, test, released) enable optimized workflow flexibility and security.

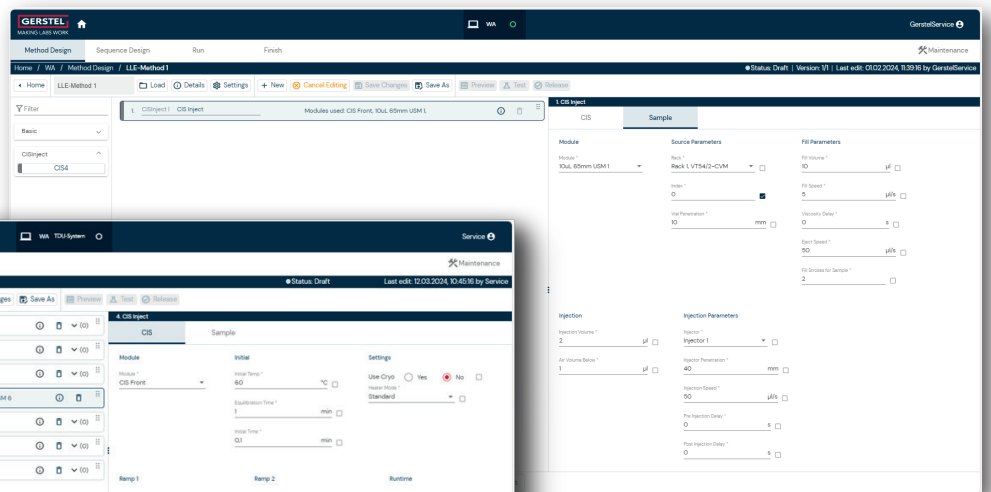
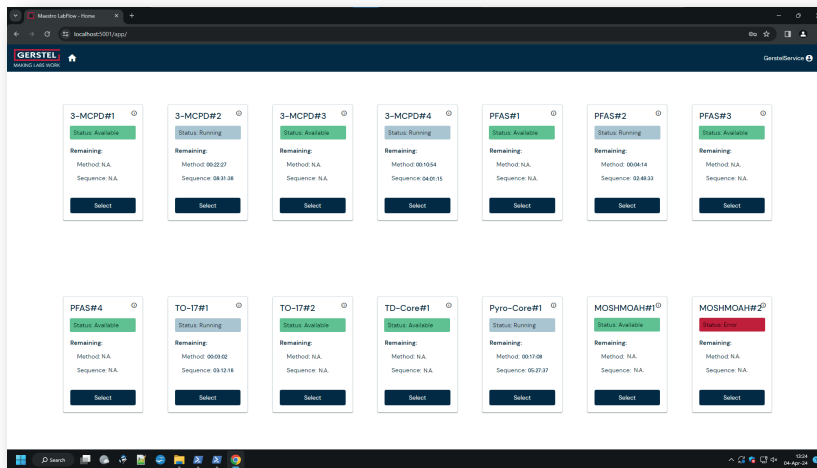
Upgrade Your Lab Efficiency with MAESTRO LabFlow –  
Your Gateway to Next Level Lab Operations!



New method design with advanced scheduler to increase efficiency, save time and process samples in parallel



With the new client server architecture, you have everything at a glance



The intuitive software interface facilitates the creation of individual workflows

# Is the MAESTRO LabFlow Software the best solution for me?

Which GERSTEL technique are you using?

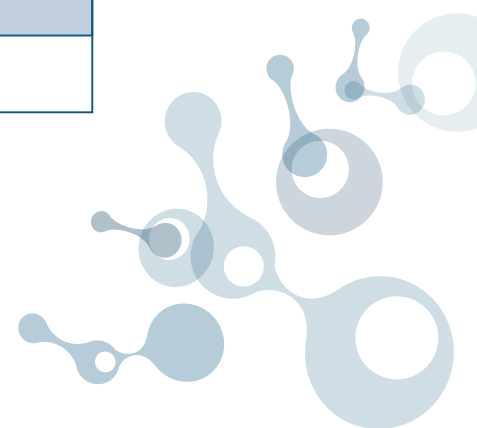
✓	✓	Future Releases
LabWorks Basic System: <ul style="list-style-type: none"> <li>■ Liquid Injection</li> <li>■ Large Volume Injection</li> <li>■ Headspace Injection</li> <li>■ Agitator</li> <li>■ Addition of Internal Standards</li> <li>■ Derivatization</li> <li>■ Stir Bar Sorptive Extraction SBSE (Twister®)</li> <li>■ TF-SPME</li> <li>■ Direct Thermal Extraction of Solids</li> <li>■ Thermal Desorption of Sorbent Tubes</li> <li>■ Thermal Extraction of liquids in µ-Vials (ATEX) with TDU 2, TD 3.5+</li> </ul>	Additional modules: <ul style="list-style-type: none"> <li>■ mVap</li> <li>■ quickMIX</li> <li>■ Cooled Tray/Stack</li> <li>■ ...</li> </ul>	<ul style="list-style-type: none"> <li>■ SPE</li> <li>■ ODP 4</li> <li>■ SPME</li> <li>■ µSPE</li> <li>■ SPE<sup>xos</sup></li> <li>■ Filtration</li> <li>■ Centrifuge</li> <li>■ Decapper</li> <li>■ Balance</li> <li>■ Barcode Reader</li> <li>■ ...</li> </ul>

Which softwares are integrated in MAESTRO LabFlow:

✓	✓
OpenLab	MassHunter

Which workflows are performed by MAESTRO LabFlow?

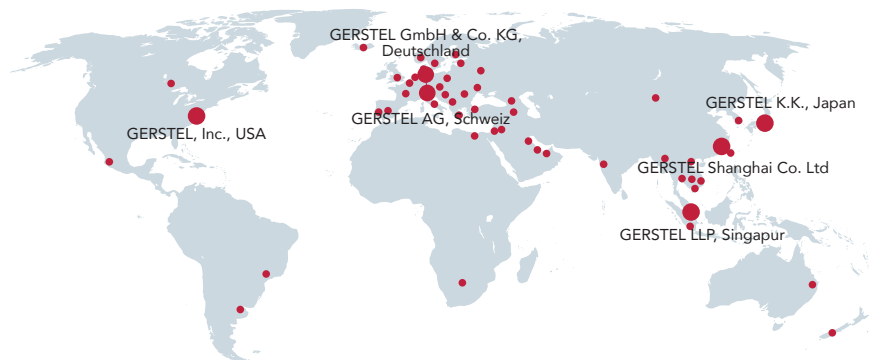
- Material Emissions
- Environmental: EU Water Framework Directive, Pesticides
- Food & Flavor: Pesticides, Contaminants, Aromas
- Air Monitoring with TD 3.5+
- Pharmaceutical: Residual Solvents (OVIs), Extractables & Leachables



MAKING LABS WORK

GERSTEL GmbH & Co. KG  
 Eberhard-Gerstel-Platz 1  
 45473 Mülheim an der Ruhr  
 Germany

[www.gerstel.com](http://www.gerstel.com)



GERSTEL®, GRAPHPACK® and TWISTER® are registered trademarks of GERSTEL GmbH & Co. KG. · Subject to change. Agilent® is a registered Trademark of Agilent Technologies, Inc. · Copyright by GERSTEL GmbH & Co. KG

